



GATE POLICY

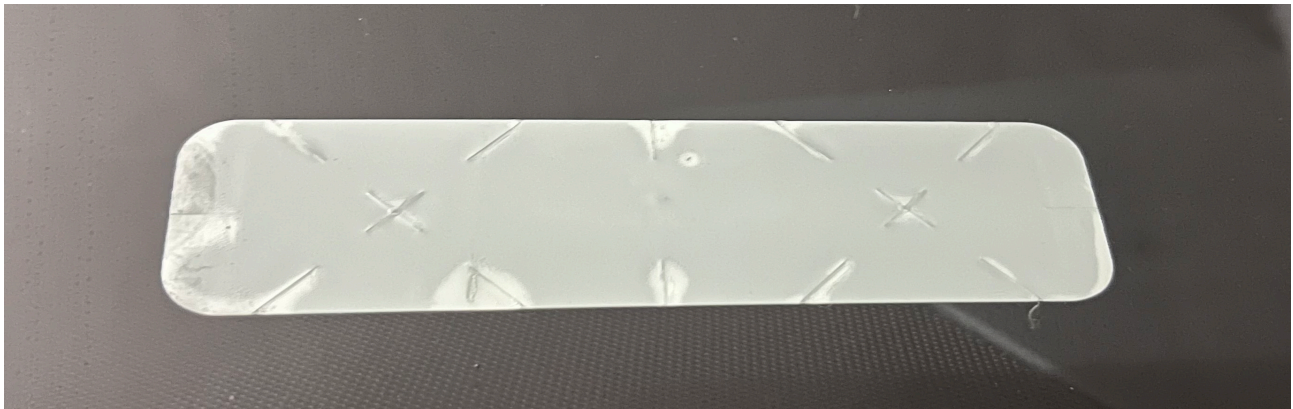
The community gates at the rear of the development that exit out on to Haverville Road are for RESIDENTS ONLY. They are opened using an RFID Sticker that is available to Homeowners only. Two per lot, additional ones may be purchased by emailing the HOA.

The operation of the gates is very simple:

- 1- Pull up to the line.
- 2- RFID Reader will read the sticker on your vehicle
- 3- The white arm will rise, do not move yet!
- 4- Once white arm is fully up, the gate will start to open. Don't move yet!
- 5- When the gate is fully open you may proceed. The gate will stay open until the vehicle has gone thru.

Please do not tailgate, wait for the arm to start coming down again. The reader will register your vehicle and go back up again. If it does not read it right away give it a moment and it will register.

Accidents happen, if you hit the gate or arm, please report this to the HOA email within 24 hours to avoid an additional fine on top of the gate repair.



Sample of the RFID Sticker

Owner Signature

Date

Owner Signature

Date

Updated 6/2022